










# POTENCY REPORT

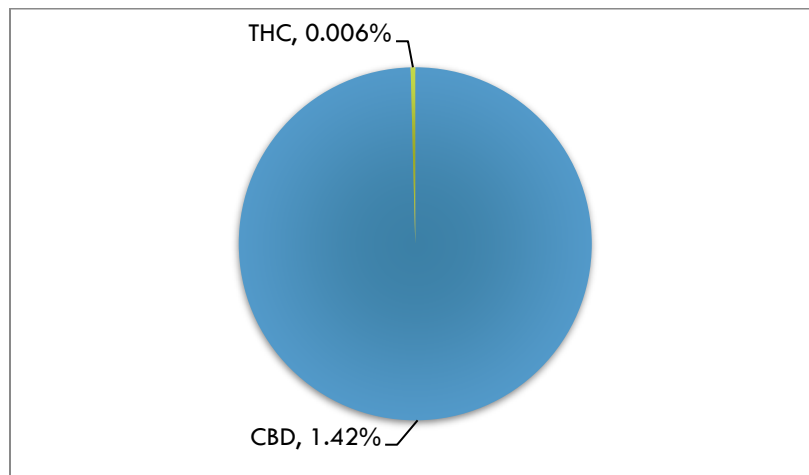
**Material Tested:** CBD Pen  
**Testing Method:** UPLC-DAD  
**Date Tested:** 01/26/2018  
**Batch Number:** C0125830  
**Testing Analyst:** Benjamin Dennis; Reviewed by: Jeremy Riggle, PhD  
**Total Product Mass:** 6.5g

---

ACIDIC COMPOUND mg/unit		NEUTRAL COMPOUND mg/unit	
<b>CBDA</b>	<0.1%	<b>CBD</b>	1.42% 
<b>THCA</b>	<0.1%	<b>THC</b>	<0.1% 
<b>CBCA</b>	<0.1%	<b>CBC</b>	<0.1% 
<b>CBGA</b>	<0.1%	<b>CBG</b>	<0.1% 
<b>CBNA</b>	<0.1%	<b>CBN</b>	<0.1% 
<b>THCVA</b>	<0.1%	<b>THCV</b>	<0.1% 
<b>CBDVA</b>	<0.1%	<b>CBDV</b>	<0.1% 

---

Cannabinoid Content (wt/wt)



Mary's Nutritionals, LLC is a wholly owned subsidiary of Mary's Medicinals, LLC. Information provided in this report is for CBD rich hemp cultivated by Elite Botanicals, Loveland CO.

